

# Phenotypic and Genotypic Characterization of *Escherichia coli* Isolated from Untreated Surface Waters

Kristopher J. Janezic, Blake Ferry, Eric W. Hendricks, Brian A. Janiga, Tiffany Johnson, Samantha Murphy, Morgan E. Roberts, Sarah M. Scott, Alexandra N. Theisen, Kai F. Hung, and Steven L. Daniel\*

Department of Biological Sciences, Eastern Illinois University, Charleston, Illinois 61920, USA

**Abstract:** A common member of the intestinal microbiota in humans and animals is *Escherichia coli*. Based on the presence of virulence factors, *E. coli* can be potentially pathogenic. The focus of this study was to isolate *E. coli* from untreated surface waters (37 sites) in Illinois and Missouri and determine phenotypic and genotypic diversity among isolates. Water samples positive for fecal coliforms based on the Colisure® test were streaked directly onto Eosin Methylene Blue (EMB) agar (37°C) or transferred to EC broth (44.5°C). EC broth cultures producing gas were then streaked onto EMB agar. Forty-five isolates were identified as *E. coli* using API 20E and Enterotube II identification systems, and some phenotypic variation was observed in metabolism and fermentation. Antibiotic susceptibility of each isolate was also determined using the Kirby-Bauer Method. Differential responses to 10 antimicrobial agents were seen with 7, 16, 2, and 9 of the isolates resistant to ampicillin, cephalothin, tetracycline, and triple sulfonamide, respectively. All of the isolates were susceptible or intermediate to amoxicillin, ciprofloxacin, polymyxin B, gentamicin, imipenem, and nalidixic acid. Genotypic variation was assessed through multiplex Polymerase Chain Reaction for four virulence genes (*stx*<sub>1</sub> and *stx*<sub>2</sub> [shiga toxin], *eaeA* [intimin]; and *hlyA* [enterohemolysin]) and one housekeeping gene (*uidA* [β-D-glucuronidase]). Genotypic variation was observed with two of the isolates possessing the virulence gene (*eaeA*) for intimin. These findings increase our understanding of the diversity of *E. coli* in the environment which will ultimately help in the assessment of this organism and its role in public health.

**Keywords:** *E. coli*, surface water, antibiotics, multiplex PCR, intimin, β-D-glucuronidase.

## INTRODUCTION

*Escherichia coli* is a Gram-negative enteric species that contains both commensal and pathogenic members [1]. Among the pathogenic strains, the shiga-toxin producing variants (STEC) account for an approximately 73,000 annual cases of reported human illnesses in the United States in an estimate made in 2002 [2]. The pathogenic forms are typically disseminated *via* incorrectly prepared food items, including ground beef products and produce, or contaminated water sources, including potable and recreational waters [3-5]. In addition to its role in human diseases, *E. coli* is also the preferred indicator organism for fecal contamination because it is the only member of the coliform group that is always tied to fecal matter from warm-blooded animals [6].

The Environmental Protection Agency's data reviewed by Macler and Merkle [7] showed that 40,000 out of 156,000 ground water systems in the United States examined by either total coliform or fecal coliform count have exceeded the mandated level of Total Coliform Rule maximum. The presence of coliforms in over 25% of groundwater systems

suggests that there is a widespread dissemination of enteric organisms in the environment. The typical sources of these contaminations include concentrated point sources (e.g. defective septic systems, leaky sewer lines, and discharges from wastewater treatment plants) and non-point sources (e.g. runoff from livestock farming and urban and rural runoff containing feces from companion animals or wildlife). After *E. coli* enters the water system, its dissemination is dependent on various geohydrological factors, such as the amount of particulates and the flow rate [8]. Recent studies have shown that once present in the environment, *E. coli* is capable of persisting and replicating under many different conditions [9]. In particular, when the environment is enriched with fecal material, *E. coli* is apparently able to flourish in localized areas and persist [10, 11]. The presence and persistence of *E. coli* in the environment raise significant concerns in tracking the dissemination pattern and following up on source-tracking efforts during disease outbreaks because they act as multiple reservoirs where rainfall or irrigation can serve to re-introduce fecal contaminants into the surrounding. As a result of this characteristic of *E. coli*, there is also concern about the spread of antibiotic resistance. In a study of water sources associated with an area with cattle farming, 24% of the 600 isolates tested showed antibiotic resistance to at least one antimicrobial agent, and many were resistant to more than one [12]. In a different study that examined the Karstic aquifers in France, the percentage of *E.*

\*Address correspondence to this author at the Department of Biological Sciences, Eastern Illinois University, 600 Lincoln Avenue, Charleston, Illinois 61920, USA; Tel: (217) 581-7840; Fax: (217) 581-7141; E-mail: [sldaniel@eiu.edu](mailto:sldaniel@eiu.edu)

*coli* isolates that showed antibiotic resistance to at least one antimicrobial agent ranged from 17 to 70%, depending on the rainfall and seasonal factors [13].

Taken together, the presence of *E. coli* in the environment poses both immediate concerns due to the widespread cases of disease outbreaks associated with water sources contaminated with pathogenic variants of *E. coli*, as well as a long-term concern over the persistence of this organism as it relates to the spreading of antibiotic resistance. Therefore, a better understanding of the characteristics of *E. coli* in surface water sources will be beneficial in order to manage public health concerns and shed light on the dynamic nature of the underlying processes governing the distribution and persistence of this organism in our environment. In this study, surface water sources in Illinois and Missouri, U.S.A., were surveyed for the presence of *E. coli*. Isolates that were obtained were then assayed for antibiotic resistance and their genetic makeup on four loci related to pathogenicity was determined using a multiplex PCR procedure.

## MATERIALS AND METHODS

### Water Collection and Processing

Samples (~100 ml) of untreated surface waters from locations in Illinois and Missouri (see Table 1 for categories and locations of surface waters sampled) were collected directly in sterile 120-ml polystyrene coliform bottles and transported to the laboratory for processing. One packet of Colisure® (IDEXX Laboratories Inc., Westbrook, ME) was added to each collected water sample, thoroughly mixed, and placed in the incubator. Unless noted otherwise, all water samples and broth or agar plate cultures were incubated at 37°C for 24–48 h. Water samples that fluoresced under a long-wave UV light after incubation were scored as positive for fecal coliforms (as stated in the Colisure® instructions) and were used for the isolation and additional testing of *E. coli*.

### Isolation and Identification of *E. coli*

Positive water samples were either transferred (0.1 ml) from Colisure® bottles to EC broth (Oxoid Ltd., Hampshire, UK) tubes with Durham tubes and incubated at 44.5°C or streaked directly onto Levine's Eosin Methylene Blue (EMB) agar (Becton, Dickinson, and Company, Sparks, MD). Following incubation, EC broth cultures that displayed gas production in Durham tubes were streaked onto EMB agar. Dark colonies, usually black with a green metallic sheen, were restreaked onto EMB agar and Gram stained to check for purity. Once isolated, organisms were then streaked onto Brain Heart Infusion (BHI) agar (Becton, Dickinson, and Company). Isolates on BHI agar that were Gram-negative single rods, positive for the catalase (based on the slide catalase test with 3% H<sub>2</sub>O<sub>2</sub>) and negative for cytochrome *c* oxidase (based on the oxidase test with 1% *N,N*-dimethyl-*p*-phenylenediamine) were tested with the API 20E (bioMérieux, Inc., Durham, NC) and Enterotube II (Becton, Dickinson, and Company) identification systems. ID codes generated from API 20E and Enterotube II tests were used with the *apiweb*<sup>tm</sup> and Interpretation Guide (codebook), respectively, to identify isolates. *E. coli* ATCC 25922 was used as a control for all phenotypic and genotypic tests performed in this study. All isolates identified as *E. coli* (as

well as *E. coli* ATCC 25922) were maintained on BHI agar slants for additional testing.

### Antibiotic Susceptibility Testing

*E. coli* isolates were transferred with sterile swabs to tubes of sterile saline to achieve turbidity equal to that of a 0.5 McFarland standard. Cell suspensions and sterile swabs were used to inoculate the surface of Mueller-Hinton agar (Becton, Dickinson, and Company) plates. Antibiotic resistance was determined by the Kirby-Bauer method using disks impregnated with the following antibiotics (Becton-Dickinson, Franklin Lakes, NJ): amoxicillin (30 µg), ampicillin (10 µg), cephalothin (30 µg), ciprofloxacin (5 µg), gentamicin (10 µg), imipenem (10 µg), nalidixic Acid (30 µg), polymyxin B (300 U), tetracycline (30 µg), and triple sulfa (0.25 mg). Inoculated plates were incubated for 24 h at 37°C, after which the diameters of inhibition zones were measured in millimeters following the manufacturer's instructions to assess resistance, intermediate, or susceptibility.

### Multiplex PCR Testing

Multiplex PCR was used for the detection of housekeeping and virulence genes in *E. coli* isolates [14, 15]. DNA was isolated from cells by taking growth from BHI agar slant or plate cultures, transferring it to 200 µl of sterile water in a microfuge tube, and heating the sample to 99°C in an Eppendorf Thermo Mixer for 15 min to lyse cells. Cooled samples were spun in microcentrifuge for 3 min at 14,000 rpm to pellet cell debris, and 150 µl of supernatant fluid was transferred to a new sterile microfuge tube and stored at 4°C until analyzed by PCR. DNA extracts (2 µl) were amplified in mixtures containing: 0.24 nM of each primer (see Table 2 for primers and expected amplicon sizes [14, 15]), 2.5 U PuReTaq DNA polymerase, 10 mM Tris-HCl, (pH 9.0), 50 mM KCl, 1.5 mM MgCl<sub>2</sub>, 200 µM of dATP, dCTP, dGTP, dTTP, and BSA (illustraPuReTaq Ready-To-Go PCR Beads, GE-Healthcare, Piscataway, NJ). Final PCR tube additions included 6 µl of primer solution (1 pmol/primer/µl), 2 µl DNA template, and 17 µl of sterile water for reaction volume of 25 µl. Mixes were initially heated to 96°C for 5 min and then subjected to 35 PCR cycles [14]. Each cycle consisted of 1 min of denaturation at 96°C; 2 min of annealing at 65°C for the first 10 cycles, decreasing to 60°C for the remaining 25 cycles; and 1.5 min of elongation at 72°C, increasing to 2.5 min in the remaining 10 cycles (cycles 25 – 35). DNA was analyzed on a 2% agarose gel containing GelRed (Biotium, Inc., Hayward, CA) in a 1X Tris boric acid EDTA buffer. A 100-bp ladder (New England Biolabs, Ipswich, MA) was used as a molecular weight size marker. Products were viewed with UV illumination, and pictures were taken using Gel Doc XR+ system; images were analyzed by Image Lab 3.0 software (BioRad Laboratories, Inc., Hercules, CA).

## RESULTS

### Isolation and Identification

From a variety of untreated surface waters collected in Illinois and Missouri (Table 1), 37 different locations were found to be positive for fecal coliforms based on the Colisure® test. From water samples collected at these locations, *E. coli* was isolated and identified. All isolates (a total

**Table 1. Categories, Names, and Locations of Surface Waters that Yielded *E. coli* Isolates**

Category (Number of Locations Sampled)	Name of Surface Water Sampled	Location	Isolate and Surface Water Abbreviation <sup>a</sup>	Total Number of Isolates (% of 45 Total)
Pond (16)				18 (40)
	Unique Homes Pond	Charleston, IL	UHP	
	House Pond	Coles County, IL	HP	
	Esarey's Pond	Charleston, IL	EP	
	SBLHC Pond	Sarah Bush Lincoln Health Center, Charleston, IL	SHP-1, SHP-2	
	Turtle Pond	Southern Illinois University, Edwardsville, IL	TP	
	Wilderness Pond	Fox Ridge State Park, IL	WP	
	KFC Pond	Charleston, IL	KFCP	
	Lantz Pond	Eastern Illinois University	LP-1, LP-2	
	Carman Pond	Eastern Illinois University	CP	
	Arcola Pond	Arcola, IL	AP	
	Wyman Park Pond	Sullivan, IL	WPP	
	Aunt's House Pond	Coles County, IL	AHP	
	BK Pond	Champaign, IL	BKP	
	Farm Pond	Coles County, IL	FP	
	Johnson Pond	Elk Grove, IL	JP	
	Cougar Trail Prairie Pond	Hoffman Estates, IL	CTPP	
Stream/creek (7)				11 (24)
	Kickapoo Creek	Charleston, IL	KC	
	Spook Road Creek	Charleston, IL	SRC	
	Charleston Town Creek	Charleston, IL	CTC-1, CTC-2, CTC-3, CTC-4, CTC-5	
	Bone Yard Creek	University of Illinois, Urbana, IL	BYC	
	Waterfowl Area Stream	Sullivan, IL	FAS	
	Tabor Park Stream	Sullivan, IL	TPS	
	Spring Valley Nature Center Stream	Schaumburg, IL	SVNCS	
Lake (9)				9 (20)
	Lake Sara	Effingham, IL	LS	
	Lake Capaha	Cape Girardeau, MO	LH	
	Lake Charleston	Charleston, IL	LC	
	Ridge Lake	Fox Ridge State Park, IL	RL	
	Dunlap Lake	Edwardsville, IL	DL	

Table 1. Contd....

Category (Number of Locations Sampled)	Name of Surface Water Sampled	Location	Isolate and Surface Water Abbreviation <sup>a</sup>	Total Number of Isolates (% of 45 Total)
	Reasor Park Lake	Charleston, IL	RPL	
	Forest Lake North	Libertyville, IL	FLN	
	Independence Grove Lake	Libertyville, IL	IGL	
	Lake Michigan	Chicago, IL	LM	
River (5)				7 (16)
	Little Wabash River	Effingham, IL	LWR	
	Mississippi River	Cape Girardeau, MO	MRM	
	Mississippi River	Alton, IL	MRI	
	Embarras River	Coles County, IL	ER-1, ER-2, ER-3	
	Des Plaines River	Libertyville, IL	DPR	

<sup>a</sup>For surface waters that yielded more than one isolate, water samples were collected from those locations at different points and/or at different times and days. In most cases, only one isolate was obtained from each surface water; however, for surface waters (SHP, LP, CTC, and ER) that yielded multiple isolates, the number after the abbreviation represents the isolate number from that particular surface water (e.g., SHP-1).

Table 2. Primers Used in the Present Study<sup>a</sup>

Primer Pair (F = forward, R = reverse)	Gene – Gene Product	Amplicon Size (bp)	Reference
hlyAF; GCATCATCAAGCGTACGTTC hlyAR; AATGAGCCAAGCTGGTTAAGCT	Enterohemolysin – cell lysis	534	[14]
eaefAF; GACCCGGCACAAGCATAAGC eaefAR; CCACCTGCAGCAACAAGAGG	Intimin – adhesion to epithelial cells, induction of TH1 immune responses	384	[14]
stx2F; GGCACGTGTCTGAAACTGCTCC stx2R; TCGCCAGTTATCTGACATTCTG	Shiga Toxin type 2 - inhibition of protein synthesis, apoptosis induction	255	[14]
stx1F; ATAATCGCCATTCGTTGACTAC stx1R; AGAACGCCACTGAGATCATC	Shiga Toxin type 1 - inhibition of protein synthesis, apoptosis induction	180	[14]
UAL754; AAAACGGCAAGAAAAAGCAG UAR900; ACGCGTGGTTACAGTCTTGCG	$\beta$ -glucuronidase – metabolism of 4-methylumbelliferyl- $\beta$ -D-glucuronide in Colisure	147	[15]

<sup>a</sup>All primers were purchased from Integrated DNA Technologies, Coralville, Iowa.

of 45) were catalase positive, oxidase negative, and Gram-negative rods occurring singly and were confirmed as *E. coli* by both API 20E and Enterotube II identification systems (Table 3). In addition, all isolates (i) grew and fermented sorbitol on sorbitol MacConkey agar, (ii) failed to test positive as *E. coli* serogroup O157:H7 by the RemelRIM™ *E. coli* O157:H7 latex test (Thermo Fisher Scientific, Lenexa, KS), and produced weak or no hemolysis on blood agar (data not shown). Only 22 and 44% of the isolates yielded an ID code identical to that of *E. coli* ATCC 25922, a common control (reference) strain, when using the API 20E and Enterotube II systems, respectively (Table 3). In this regard, all test results

obtained in this study for *E. coli* ATCC 25922 were typical for *E. coli*, based on information provided by the API 20E and Enterotube II identification systems (Table 3). No atypical test results occurred for the control strain with either system. However, variations in phenotype between isolates and between isolates and the control strain were observed as demonstrated by the differences in the biochemical tests ONPG, LDC, ODC, MAN, RHA, and SAC for the API 20E system and LDC, ODC, gas production, ADO, and DUC for the Enterotube II system (Table 3). Nonetheless, the 10 different ID codes generated from the results of each test system positively identified all isolates as *E. coli*.

**Table 3. Identification (ID) Codes and Responses of Isolates Identified as *E. coli* based on the API 20E and Enterotube II Test Systems**

ID Code <sup>a</sup>		Number of Isolates (% of 45 Total)	Test result <sup>b</sup>																								
API 20E	Enterotube II		ONPG	ADH	LDC	ODC	CIT	H <sub>2</sub> S	URE	TDA	IND	VP	GEL	GLU	MAN	INO	SOR	RHA	SAC	MEL	AMY	ARA	GAS	ADO	DUL	PHE	LAC
5144572		19 (42.2)	+	-	+	+	-	-	-	-	+	-	-	+	+	-	+	+	+	-	+						
5144552		10 (22.2)	+	-	+	+	-	-	-	-	+	-	-	+	+	-	+	+	-	+	-	+					
4144572		5 (11.1)	-	-	+	+	-	-	-	-	+	-	-	+	+	-	+	+	+	+	-	+					
5044552		4 (8.8)	+	-	+	-	-	-	-	-	+	-	-	+	+	-	+	+	-	+	-	+					
5044572		2 (4.4)	+	-	+	-	-	-	-	-	+	-	-	+	+	-	+	+	+	+	-	+					
5144472		1 (2.2)	+	-	+	+	-	-	-	-	+	-	-	+	-	+	+	+	+	+	-	+					
5144562		1 (2.2)	+	-	+	+	-	-	-	-	+	-	-	+	+	-	+	-	+	+	-	+					
1044552		1 (2.2)	+	-	-	-	-	-	-	-	+	-	-	+	+	-	+	+	-	+	-	+					
0044552		1 (2.2)	-	-	-	-	-	-	-	-	+	-	-	+	+	-	+	+	-	+	-	+					
5044542		1 (2.2)	+	-	+	-	-	-	-	-	+	-	-	+	+	-	+	-	+	+	-	+					
5144552 <sup>c</sup>		<i>E. coli</i> ATCC 25922	+	-	+	+	-	-	-	-	+	-	-	+	+	-	+	+	-	+	-	+					
	36560	20 (44.4)			+	+	-	-	-	-	+			+			+					+	+	-	-	-	+
	36570	7 (15.6)			+	+	-	-	-	-	+			+			+					+	+	-	+	-	+
	26570	5 (11.1)			+	+	-	-	-	-	+			+			+					+	-	-	+	-	+
	26560	4 (8.8)			+	+	-	-	-	-	+			+			+					+	-	-	-	-	+
	34570	3 (6.7)			+	-	-	-	-	-	+			+			+					+	+	-	+	-	+
	34560	2 (4.4)			+	-	-	-	-	-	+			+			+					+	+	-	-	-	+
	24560	1 (2.2)			+	-	-	-	-	-	+			+			+					+	-	-	-	-	+
	34760	1 (2.2)			+	-	-	-	-	-	+			+			+					+	+	+	-	-	+
	30560	1 (2.2)			-	-	-	-	-	-	+			+			+					+	+	-	-	-	+
	30570	1 (2.2)			-	-	-	-	-	-	+			+			+					+	+	-	+	-	+
	36560 <sup>c</sup>	<i>E. coli</i> ATCC 25922			+	+	-	-	-	-	+			+			+					+	+	-	-	-	+

<sup>a</sup>All codes listed identified isolates as *E. coli*.

<sup>b</sup>Biochemical tests: ONPG, 2-nitrophenyl-β-D-galactopyranoside to detect β-galactosidase; ADH, arginine dihydrolase; LDC, lysine decarboxylase; ODC, ornithine decarboxylase; CIT, citrate utilization; H<sub>2</sub>S, H<sub>2</sub>S production; URE, urease; TDA, tryptophan deaminase; IND, indole production; VP, Voges-Proskauer test for acetoin; GEL, gelatinase; GLU, glucose fermentation; MAN, mannitol fermentation; INO, inositol fermentation; SOR, sorbitol fermentation; RHA, rhamnose fermentation; SAC, saccharose (sucrose) fermentation; MEL, melibiose fermentation; AMY, amygdalin fermentation; ARA, arabinose fermentation; GAS, gas production; ADO, adonitol fermentation; DUL, dulcitol fermentation; PHE, phenylalanine deaminase; LAC, lactose fermentation. Red shaded areas indicate tests that were different from *E. coli* ATCC 25922, the control (reference) strain.

<sup>c</sup>API 20E and Enterotube II test results for *E. coli* ATCC 25922.

**Metabolic Diversity**

As a marker for phenotypic diversity, a 12-digit barcode was created for each isolate by combining their individual ID codes from both the API 20E (7-digit code) and Enterotube II (5-digit code) test systems. A total of 18 different barcodes (phenotypes) were recovered from the 37 surface water sites

sampled (Table 4). The barcodes most commonly recovered were 5144572-36560 and 5144552-36560. These two phenotypes accounted for 18 (40%) of the 45 isolates and were isolated at least once from each of the different categories (pond, stream/creek, lake, and river) of surface waters that were surveyed. Based on the results of the API 20E system, these two phenotypes differed by a single biochemical test,

**Table 4. Barcodes as an Indication of Phenotypic Diversity Among Isolates of *E. coli* Recovered from Different Surface Waters**

Barcode <sup>a</sup>	Number of Isolates Per Barcode (% of 45 Total)	Isolate and Surface Water that Yielded Observed Barcode (Phenotype) <sup>b</sup>			
		Pond	Stream/creek	Lake	River
5144572-36560	11(24.4)	SHP-1 BKP	SRC CTC-1	DL IGL FLN RPL	DPR ER-1 LWR
5144552-36560	7 (15.6)	UHP EP AP	FAS KC	RL	ER-2
4144572-36570	4 (8.9)		CTC-2 CTC-3	LH LS	
5144572-36570	3(6.7)	LP-1 LP-2 WP			
5144572-26570	3(6.7)	CTPP FP	CTC-4		
5144572-26560	2(4.4)	KFCP	SVNCS		
5144552-26570	2(4.4)	TP			ER-3
5044552-34560	2(4.4)	AHP		LM	
5044572-34570	2(4.4)	HP CP			
5144562-36560	1(2.2)				MRM
5144552-26560	1(2.2)		TPS		
5144472-36560	1(2.2)	WPP			
5044552-34570	1(2.2)	JP			
5044552-24560	1(2.2)			LC	
5044542-34760	1(2.2)		CTC-5		
4144572-26560	1(2.2)	SHP-2			
1044552-30560	1(2.2)		BYC		
0044552-30570	1(2.2)				MRI
5144552-36560	<i>E. coli</i> ATCC 25922				

<sup>a</sup>Per barcode, the first set of numbers (7 digits) represented the ID code generated for an isolate by the API 20E system, and the second set of numbers (5 digits) represented the ID code generated for the same isolate by the Enterotube II system. These were combined to form a 12-digit barcode. All codes identified isolates as *E. coli*.

<sup>b</sup>Use isolate abbreviation and Table 1 to determine the source of the isolate (i.e., name and location of the surface water sampled).

saccharose fermentation. The phenotype 5144572-36560 (11 isolates) fermented saccharose while the other phenotype 5144552-36560 (7 isolates) was negative for saccharose fermentation (Tables 3 and 4). Nine barcodes were “unique” in that each of these phenotypes was represented by only a

single isolate while the other 7 barcodes were identified in 2 to 4 isolates each (Table 4). Overall, there appeared to be no obvious trends in the category of surface water that yielded these “unique” phenotypes of *E. coli*.

### Antibiotic Resistance Profiles

To further evaluate phenotypic diversity, the Kirby-Bauer method was used to assess the *in vitro* susceptibilities of isolates to 10 different antimicrobial agents. All 45 isolates were either susceptible or intermediate in their responses to amoxicillin, ciprofloxacin, gentamicin, imipenem, nalidixic acid, and polymyxin B (Table 5). In contrast, resistance to ampicillin, cephalothin, tetracycline, and triple sulfa was observed with 7, 16, 2, and 9 of the isolates, respectively (Table 5). Furthermore, a total of 19 of the 45 isolates (42.2%) were resistant to at least one of the antimicrobial agents, including 11 isolates (24.9%) which were resistant to 2 or 3 of the antimicrobial agents tested (Table 6). Multi-resistant isolates were limited to ampicillin, cephalothin, and triple sulfa resistance. There were no apparent linkages between ampicillin, cephalothin, and triple sulfa resistance, and the only potential pattern was that ampicillin, cephalothin, or triple sulfa resistance did not occur in combination with tetracycline resistance. Resistant isolates represented 12 (66.7%) of the 18 different barcodes (phenotypes) with half of the 38 isolates in these 12 phenotypes exhibiting resistance (Table 6). It should be noted that the barcode most associated with resistance was 5144572-36560 and that this phenotype (positive for saccharose fermentation) was also the most frequently isolated (Table 4). Of the 11 isolates with the 5144572-36560 barcode, 6 (54.5%) showed some level of resistance, including one isolate that was resistant to three antimicrobial agents (Table 6). In contrast, six barcodes (5044572-34570, 5144562-36560, 5044552-34570, 5044-542-34760, 1044552-30560, and 0044552-3057050), mostly “unique” phenotypes consisting of a combined total of 7 isolates, did not display resistance to any of the antimicrobial agents tested. Overall, the majority of resistant isolates were recovered from ponds or lakes, the most common types of surface water surveyed in this study (Table 6).

### Multiplex PCR Analysis

Multiplex PCR detected, based on the presence of a 384-bp amplicon, the virulence gene *eaeA* (intimin) in CTC-1 (5144572-36560) and CTPP (5144572-26570) isolated from Charleston Town Creek and Cougar Trail Prairie Pond, respectively (Fig. 1, Lanes 5 and 6; Tables 1 and 4). The other three virulence genes (*stx*<sub>1</sub>, *stx*<sub>2</sub>, and *hlyA*) were not detected in CTC-1 and CTPP. In addition, none of these four virulence genes were detected in the remaining 43 isolates which are represented by FLN (5144572-36560), TP (5144552-26570), LWR (5144572-36560), and SRC (5144572-36560) (Fig. 1, Lanes 7-10, respectively). Forty-four of the isolates, as well as *E. coli* O157:H7 and ATCC 25922 were positive for the housekeeping gene *uidA* ( $\beta$ -D-glucuronidase) based on the presence of a 147-kp amplicon (Fig. 1). Only with isolate LC was the *uidA* gene not detected (Fig. 1, Lane 4; Tables 1 and 4). This organism, isolated from Lake Charleston, was the sole isolate for the barcode 5044552-24560, a “unique” phenotype which was negative for ornithine decarboxylase (ODC) and gas production (GAS) and resistant to 2 antimicrobial agents (Table 3).

### DISCUSSION

In this study, a survey of unrelated urban and rural surface waters (e.g. ponds, streams/creeks, lakes, and rivers) revealed the widespread distribution of *E. coli* across diverse sources. Historically, these results would suggest point and/or non-point sources of fecal contamination [16-20]. However, recent studies have shown that some *E. coli* strains may persist and replicate in natural environments such as soils, sediments, and surface waters [11, 12, 21-28]. Therefore, the presence of *E. coli* alone may no longer represent recent fecal contamination and instead, may indicate the persistence of some strains in the environment. Future studies using longitudinal monitoring [29, 30] and microbial source

**Table 5. Response of *E. coli* Isolates to Ten Different Antimicrobials Agents**

Antimicrobial Agent (Disk Potency)	Number of Isolates (% of 45 Total) <sup>a</sup>		
	Resistant	Intermediate	Susceptible
Amoxicillin (30µg)	0 (0.0)	4 (8.9)	41 (91.1)
Ampicillin (10 µg)	7 (15.6)	12 (26.7)	26 (57.8)
Cephalothin (30 µg)	16 (35.6)	20 (44.4)	9 (20.0)
Ciprofloxacin (5 µg)	0 (0.0)	0 (0.0)	45 (100)
Gentamicin (10 µg)	0 (0.0)	0 (0.0)	45 (100)
Imipenem (10 µg)	0 (0.0)	0 (0.0)	45 (100)
Nalidixic acid (30 µg)	0 (0.0)	0 (0.0)	45 (100)
Polymyxin B (300 U)	0 (0.0)	0 (0.0)	45 (100)
Tetracycline (30 µg)	2 (4.4)	0 (0.0)	43 (95.6)
Triple sulfa (0.25 mg)	9 (20.0)	4 (8.9)	32 (71.1)

<sup>a</sup>Abbreviations: R = Resistant and S = Susceptible.

**Table 6.** *E. coli* Isolates Resistant to One or More Antimicrobial Agents

Resistance Level <sup>a</sup>	Number of Resistant Isolates (% of 45 total)	Response to Antimicrobial Agent <sup>b</sup> (Disk Potency)				Barcode and ID and Source of Resistant Isolate <sup>c</sup>											
		Ampicillin (10 µg)	Cephalothin (30 µg)	Tetracycline (30 µg)	Triple sulfa (0.25 mg)	5144572-36560	5144472-36560	5144572-26560	5144552-36560	4144572-36570	5144552-26570	5044552-34560	5144572-26570	4144572-26560	5044552-24560	5144572-36570	5144552-26560
1	8 (17.8)	I	R	S	I	Lake: DL, IGL											
		I	R	S	S	Pond: SHP-1	Pond: WPP										
		I	R	S	S			Pond: KFCP	Stream/creek: FAS								
		S	I	R	S			Pond: UHP	Lake: LH								
2	7 (15.6)	I	R	S	R	Lake: RPL					River: ER-3	Pond: AHP					
		R	R	S	S							Pond: FP	Pond: SHP-2				
		R	I	S	R	River: DPR											
		S	R	S	R									Lake: LC			
3	4 (8.9)	R	R	S	R	Lake: FLN					Pond: TP					Pond: WP	Stream/creek: TPS
Total number of resistant isolates per barcode (phenotype):						6	1	1	2	1	2	1	1	1	1	1	1
Total number of isolates per barcode (phenotype):						11	1	2	7	4	2	2	3	1	1	3	1

<sup>a</sup>Indicates the number (1, 2, or 3) of antimicrobial agents a particular isolate was resistant to as measured by the Kirby-Bauer method.

<sup>b</sup> Abbreviations: R = Resistant; I = Intermediate; and S = Susceptible.

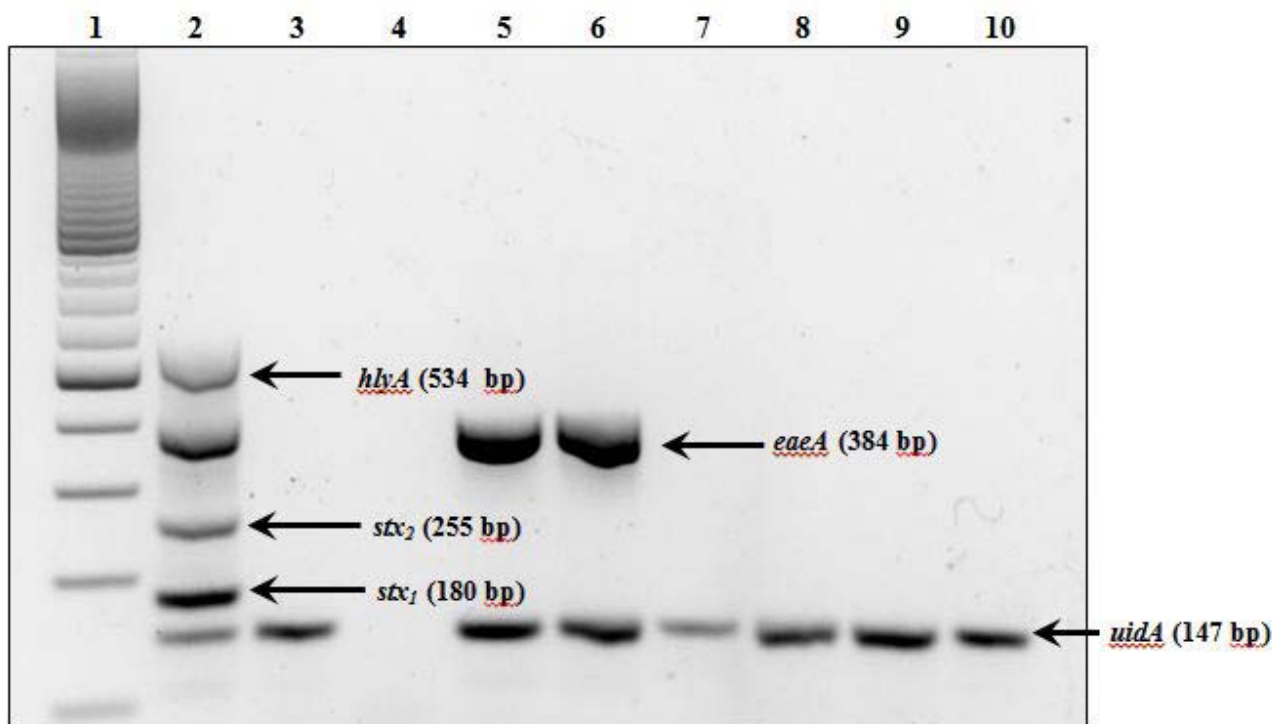
<sup>c</sup> Use isolate abbreviation and Table 1 to determine the source of the isolate (i.e., name and location of the surface water sampled).

tracking [31-33] might help shed more light on the persistence and origin, respectively, of *E. coli* at the sites surveyed in our study. Nevertheless, *E. coli* in surface waters is a public health concern, and our data showed that the isolates from different surface water sources possess different phenotypic and genotypic traits (Tables 3, 4, and 6; Fig. 1). Consequently, with their diverse *E. coli* populations, these surface waters have the potential to serve as reservoirs for the dissemination of currently existing strains as well as the emergence of new variants. In this regard, some of the phenotypic and genotypic attributes related to public health concerns include (i) metabolic richness, which may promote survival of different strains in the environment; (ii) possession of antibiotic resistance; and (iii) harboring of virulence factors.

Barcodes (also referred to as fingerprints or profiles), normally assigned to microorganisms based on phenotypic

or molecular analyses, have been used over the years to identify, compare, and track microorganisms [34-39]. In the present study, the diversity of metabolic capabilities among isolates was revealed using the combined API 20E and Enterotube II identification systems, where 18 unique barcodes (i.e., metabolic fingerprints) were identified from the 45 isolates tested (Table 3). No apparent correlation was detected between isolate barcodes and the types of surface water sampled (Table 4). Furthermore, 6 isolates yielded a negative ONPG test result in the API 20E system, suggesting the absence of  $\beta$ -galactosidase activity; yet, these same 6 isolates were positive for lactose utilization in both the Enterotube II and EC broth assays. This discrepancy may be due to the slow conversion of the ONPG substrate under API 20E conditions or to the fact that some strains of *E. coli* are ONPG negative [40, 41].





**Fig. (1).** Detection of virulence and housekeeping genes in *E. coli* isolates by multiplex PCR. Lanes: 1, 100-base pair DNA ladder; 2, positive control (*E. coli* O157:H7); 3, negative control (*E. coli* ATCC 25922; 5144552-36560); 4, LC (5044552-24560); 5, CTC-1 (5144572-36560); 6, CTPP (5144572-26570); 7, FLN (5144572-36560); 8, TP (5144552-26570); 9, LWR (5144572-36560); and 10, SRC (5144572-36560). Use isolate abbreviation and Table 1 to determine the source of the isolate (i.e., name and location of the surface water sampled). The 12-digit barcode (Table 4) for each isolate is shown in parentheses. Virulence genes were *stx*<sub>1</sub> and *stx*<sub>2</sub> (shiga toxin), *eaeA* (intimin), and *hlyA* (enterohemolysin), and the housekeeping gene was *uidA* ( $\beta$ -D-glucuronidase) (Table 2).

The observed heterogeneity in metabolic potentials (barcodes) among our isolates may reveal stochastic events unrelated to selective pressures or it may be seen as evidence for differences in microhabitats among water sources serving as divergent selective pressures. Regardless, this diversity may broaden the ecological adaptability of the species. For instance, 28 isolates represented by 5 barcodes had the ability to utilize sucrose, which is not a trait identified in some reference strains such as *E. coli* B, C, and K-12 [42] and *E. coli* ATCC 25922 (this study; Table 3). This ability can provide an obvious survival advantage in environments where sucrose becomes available. Further, in light of the new studies suggesting that *E. coli* strains persist in the environment [11, 21-28], metabolic heterogeneity can become fodder for natural selection. Indeed, recent studies have shown that *E. coli* populations in surface waters are genetically diverse and often different than those in sediments or soils [12, 22, 23, 28].

Of the 45 isolates identified in this study, 42% (19 isolates) showed resistance to at least 1 of the 9 antimicrobial drugs. In comparison, a survey of both sediment and surface water in California and a survey of a karstic system in France showed that 24% (out of 600) and 20% (out of 392) *E. coli* isolates carried at least 1 resistance, respectively [12, 13]. In our survey, 4 different drugs were ineffective against at least 1 isolate: cephalothin, triple sulfa, ampicillin, and tetracycline. The 4 most common ineffective antimicrobial drugs in the California and France surveys were rifampicin,

erythromycin, tetracycline, and ampicillin and tetracycline, chloramphenicol, amoxicillin, and ticarcillin, respectively [12, 13]. Moreover, amoxicillin, cephalothin, ticarcillin, and sulfa drugs were also found to be ineffective against many non-*E. coli* enteric isolates [43], suggesting that the resistance to these drugs is widespread among members of the *Enterobacteriaceae*.

While our survey identified 4 isolates with resistance to 3 different antimicrobial drugs (ampicillin, cephalothin, and triple sulfa), isolates that are resistant to up to 9 different drugs have been discovered [13]. The 4 isolates in our survey were found in 4 different barcode groups and originated from 4 different geographical areas. Notably, two of the barcodes that contained isolates with resistance to 3 antimicrobial drugs also contained isolates with resistance to fewer than 3 antimicrobial drugs. At the same time, 19 of the 37 sites sampled yielded at least 1 isolate with antibiotic resistance. Taken together, our data suggested that there was no direct correlation between the antibiotic resistance of isolates and either their geographic origin or metabolic capabilities. Nonetheless, the presence of resistant organisms in natural surface waters is a concern for both public health issues and for their potential impact on natural microbiota due to their role as natural reservoirs of resistance phenotypes, especially when the tendency of these organisms to replicate and persist in the environment is also taken into consideration [44]. With resistant *E. coli* types present in the environment, the chance of lateral gene transfer events, like the acquisition of

a broad-spectrum  $\beta$ -lactamase determinant *bla*(CTX-M-15) by a pathogen, is higher [45]. Of the three mechanisms known to contribute to horizontal gene transfer (conjugation, transformation, and transduction), the conjugal transfer of plasmids between microorganisms plays a pivotal role in the evolution of antibiotic resistance and virulence among bacteria including the emergence of novel variants of *E. coli* [45-48]. Whether plasmids (conjugal or otherwise) contributed to the antibiotic resistance among our *E. coli* isolates is unknown. Studies in the future which target the plasmid profiles of our isolates would help provide some insight into the nature of the observed resistance.

In this regard, recent comparative genomic analyses have shown that several virulence factors in pathogenic *E. coli* strains originated from lateral gene transfer events [49, 50]. Multiplex PCR targeting 3 known virulence genes showed that none of the isolates in our survey contained the *stx*<sub>1</sub>/*stx*<sub>2</sub> or *hlyA* genes, while 2 isolates with different barcodes for metabolic capacities possessed the *eaeA* gene (Fig. 1). These findings appear to rule out the possibility that any of our isolates were enterohemorrhagic (EHEC) or uropathogenic (UPEC) strains of *E. coli*, but the detection of *eaeA* indicated that the enteropathogenic *E. coli* (EPEC) pathotype may be present [51-53]. In comparison, one study reported that the intimin gene (*eaeA*) was present in almost 90% of all *E. coli* isolates identified in different estuaries, while the *stx*<sub>1</sub> and *stx*<sub>2</sub> genes were found in about 25% of isolates [54]. Interestingly, in that study, all the isolates carrying the shiga toxin genes also carried the intimin gene.

The *uidA* gene has been used in PCR assays for *E. coli* as a control amplicon due to the shared ability to cleave the Colisure<sup>®</sup> indicator 4-methylumbelliferyl- $\beta$ -D-glucuronide (MUG) among different strains [15]. In some cases, *uidA* has even been detected in *E. coli* strains that tested negative for MUG utilization [15]. Of the 45 isolates, 44 produced a *uidA* amplicon (Fig. 1) of the correct size and were MUG positive in Colisure<sup>®</sup> tests (samples fluoresced under long-wave UV light). However, one isolate (LC; Fig. 1, lane 4) did not produce a *uidA* amplicon despite being MUG positive. This aberrant result may be due to sampling methods where only one colony per water sample was assayed with PCR while there may have been multiple strains present in the sample. Furthermore, despite positive and negative PCR controls, failed PCR amplifications as a result of unidentified inhibitory residues in the DNA extract or sufficient sequence divergence at the primer-annealing sites cannot be ruled out. Lastly, the possibility also exists that this is a new variant capable of cleaving MUG with a novel mechanism.

In summary, our results demonstrated the widespread dispersion of *E. coli* strains of diverse characteristics (metabolic capabilities, antimicrobial resistance, and presence of pathogenic loci). This heterogeneity in natural *E. coli* populations has direct implications for interpreting the impact of fecal coliforms on our natural waters and public health. Further studies that can provide more detailed analyses of host origins, geographical sources, persistence behaviors, and dispersal patterns of *E. coli* strains will be required. Examinations on the fitness and survival qualities of these variants will also be beneficial.

## CONFLICTS OF INTEREST

The authors confirm that this article content has no conflicts of interest.

## ACKNOWLEDGEMENTS

Financial support from the Department of Biological Sciences and from a Biological Sciences Undergraduate Research Grant (K.J.J.) is greatly appreciated.

## REFERENCES

- [1] Scheutz F, Strockbine N, Genus I. *Escherichia* Castellani and Chalmers 1919, 941<sup>AL</sup>. In: Brenner D, Krieg N, Staley J, Eds. *Bergey's Manual of Systematic Bacteriology, The Proteobacteria, Part B: The Gammaproteobacteria*. 2<sup>nd</sup> ed. New York: Springer 2005; pp. 607-25.
- [2] Rangel JM, Sparling PH, Crowe C, Griffin PM, Swerdlow DL. Epidemiology of *Escherichia coli* O157:H7 outbreaks, United States, 1982-2002. *Emerging Infect Dis* 2005; 11: 603-9.
- [3] Brunkard JM, Ailes E, Roberts VA, et al. Surveillance for waterborne disease outbreaks associated with drinking water---United States, 2007--2008. *MMWR Surveill Summ* 2011; 60: 38-68.
- [4] Gould LH, Nisler AL, Herman KM, et al. Surveillance for foodborne disease outbreaks - United States, 2008. *MMWR Morb Mortal Wkly Rep* 2011; 60: 1197-202.
- [5] Hlavsa MC, Roberts VA, Anderson AR, et al. Surveillance for waterborne disease outbreaks and other health events associated with recreational water --- United States, 2007--2008. *MMWR Surveill Summ* 2011; 60: 1-32.
- [6] Medema GJ, Payment P, Dufour A, et al. *Safe Drinking Water: An Ongoing Challenge. Assessing microbial safety of drinking water: Improving approaches and methods*. Paris: WHO Drinking Water Quality Series, OECD-WHO 2003; pp. 11-46.
- [7] Macler BA, Merkle JC. Current knowledge on groundwater microbial pathogens and their control. *Hydrogeol J* 2000; 8: 29-40.
- [8] Foppen JWA, Schijven JF. Evaluation of data from the literature on the transport and survival of *Escherichia coli* and thermotolerant coliforms in aquifers under saturated conditions. *Water Res* 2006; 40: 401-26.
- [9] Ishii S, Sadowsky MJ. *Escherichia coli* in the environment: implications for water quality and human health. *Microbes Environ* 2008; 23: 101-8.
- [10] Fremaux B, Prigent-Combaret C, Vernozy-Rozand C. Long-term survival of Shiga toxin-producing *Escherichia coli* in cattle effluents and environment: An updated review. *Vet Microbiol* 2008; 132: 1-18.
- [11] Topp E, Welsh M, Tien Y-C, et al. Strain-dependent variability in growth and survival of *Escherichia coli* in agricultural soil. *FEMS Microbiol Ecol* 2003; 44: 303-8.
- [12] Ibekwe AM, Murinda SE, Graves AK. Genetic diversity and antimicrobial resistance of *Escherichia coli* from human and animal sources uncovers multiple resistances from human sources. *PLoS ONE* 2011; 6: e20819.
- [13] Flores Ribeiro A, Laroche E, Hanin G, et al. Antibiotic-resistant *Escherichia coli* in karstic systems: a biological indicator of the origin of fecal contamination? *FEMS Microbiol Ecol* 2012; 81: 267-80.
- [14] Paton AW, Paton JC. Detection and characterization of shiga toxinigenic *Escherichia coli* by using multiplex PCR assays for *stx*<sub>1</sub>, *stx*<sub>2</sub>, *eaeA*, enterohemorrhagic *E. coli* *hlyA*, *rfbO111*, and *rfbO157*. *J Clin Microbiol* 1998; 36: 598-602.
- [15] Bej AK, DiCesare JL, Haff L, Atlas RM. Detection of *Escherichia coli* and *Shigella* spp. in water by using the polymerase chain reaction and gene probes for *uid*. *Appl Environ Microbiol* 1991; 57: 1013-7.
- [16] Riebschleager K, Karthikeyan R, Srinivasan R, McKee K. Estimating potential *E. coli* sources in a watershed using spatially explicit modeling techniques. *J Am Water Resour Assoc* 2012; 48: 745-61.

- [17] Simpson JM, Santo Domingo JW, Reasoner DJ. Microbial source tracking: state of the science. *Environ Sci Technol* 2002; 36: 5279-88.
- [18] Evans TM, LeChevallier MW, Waarvick CE, Seidler RJ. Coliform species recovered from untreated surface water and drinking water by the membrane filter, standard, and modified most-probable-number techniques. *Appl Environ Microbiol* 1981; 41: 657-63.
- [19] Association APH. Standard methods for the examination of water and wastewater. 16<sup>th</sup> ed. Washington, D.C.: American Public Health Association 1985.
- [20] Parveen S, Murphree RL, Edmiston L, Kaspar CW, Portier KM, Tamplin ML. Association of multiple-antibiotic-resistance profiles with point and nonpoint sources of *Escherichia coli* in Apalachicola Bay. *Appl Environ Microbiol* 1997; 63: 2607-12.
- [21] Beversdorf L, Bornstein-Forst S, McLellan S. The potential for beach sand to serve as a reservoir for *Escherichia coli* and the physical influences on cell die-off. *J Appl Microbiol* 2007; 102: 1372-81.
- [22] Byappanahalli MN, Whitman RL, Shively DA, Sadowsky MJ, Ishii S. Population structure, persistence, and seasonality of autochthonous *Escherichia coli* in temperate, coastal forest soil from a Great Lakes watershed. *Environ Microbiol* 2005; 8: 504-13.
- [23] Ishii S, Ksoll WB, Hicks RE, Sadowsky MJ. Presence and growth of naturalized *Escherichia coli* in temperate soils from Lake Superior watersheds. *Appl Environ Microbiol* 2006; 72: 612-21.
- [24] Ksoll WB, Ishii S, Sadowsky MJ, Hicks RE. Presence and sources of fecal coliform bacteria in epilithic periphyton communities of Lake Superior. *Appl Environ Microbiol* 2007; 73: 3771-8.
- [25] Anderson KL, Whitlock JE, Harwood VJ. Persistence and differential survival of fecal indicator bacteria in subtropical waters and sediments. *Appl Environ Microbiol* 2005; 71: 3041-8.
- [26] Oh S, Buddenborg S, Yoder-Himes DR, Tiedje JM, Konstantinidis KT. Genomic diversity of *Escherichia* isolates from diverse habitats. *PLoS ONE* 2012; 7: e47005.
- [27] Kinzelman J, McLellan S, Daniels A, *et al.* Non-point source pollution: determination of replication versus persistence of *Escherichia coli* in surface water and sediments with correlation of levels to readily measurable environmental parameters. *J Water Health* 2004; 2: 103-14.
- [28] Goto DK, Yan T. Genotypic diversity of *Escherichia coli* in the water and soil of tropical watersheds in Hawaii. *Appl Environ Microbiol* 2011; 77: 3988-97.
- [29] Ottosson JR, Jarnheimer PÅ, Stenström TA, Olsen B. A longitudinal study of antimicrobial resistant faecal bacteria in sediments collected from a hospital wastewater system. *Infect Ecol Epidemiol* 2012; 2: 7438.
- [30] Gautam R, Kulow M, Döpfer D, *et al.* The strain-specific dynamics of *Escherichia coli* O157:H7 faecal shedding in cattle post inoculation. *J Biol Dyn* 2012; 6: 1052-66.
- [31] Kaspar CW, Burgess JL, Knight IT, Colwell R. Antibiotic resistance indexing of *Escherichia coli* to identify sources of fecal contamination in water. *Can J Microbiol* 1990; 36: 891-4.
- [32] Staley C, Gordon KV, Schoen ME, Harwood VJ. Performance of two human-associated microbial source tracking qPCR methods in various Florida water types and implications for microbial risk assessments. *Appl Environ Microbiol* 2012; 78: 7317-26.
- [33] Moussa SH, Massengale RD. Identification of the sources of *Escherichia coli* in a watershed using carbon-utilization patterns and composite data sets. *J Water Health* 2008; 6: 197-207.
- [34] Buckley P, Rivers B, Katoski S, *et al.* Genetic barcodes for improved environmental tracking of an anthrax simulant. *Appl Environ Microbiol* 2012; 78(23): 8272-80.
- [35] O'Sullivan O, O'Callaghan J, Sangrador-Vegas A, *et al.* Comparative genomics of lactic acid bacteria reveals a niche-specific gene set. *BMC Microbiol* 2009; 9: 50.
- [36] Wang GQ, Zhou FF, Olman V, Su YY, Xu Y, Li F. Computational prediction and experimental validation of novel markers for detection of STEC O157: H7. *World J Gastroenterol* 2011; 17: 1910-4.
- [37] Raengpradub S. Microbial Identification: tracking the great unknown with innovative and advanced technologies. *JALA Charlothers Va* 2009; 14: 232-4.
- [38] Ahmed W, Neller R, Katouli M. Host species-specific metabolic fingerprint database for enterococci and *Escherichia coli* and its application to identify sources of fecal contamination in surface waters. *Appl Environ Microbiol* 2005; 71: 4461-8.
- [39] Wicki M, Karabulut F, Auckenthaler A, Felleisen R, Tanner M, Baumgartner A. Identification of fecal input sites in spring water by selection and genotyping of multiresistant *Escherichia coli*. *Appl Environ Microbiol* 2011; 77: 8427-33.
- [40] Merlino J, Siarakas S, Robertson GJ, Funnell GR, Gottlieb T, Bradbury R. Evaluation of CHROMagar orientation for differentiation and presumptive identification of gram-negative bacilli and *Enterococcus* species. *J Clin Microbiol* 1996; 34: 1788-93.
- [41] Abbott SL, Hanson DF, Felland TD, Connell S, Shum AH, Janda JM. *Escherichia coli* O157: H7 generates a unique biochemical profile on MicroScan conventional gram-negative identification panels. *J Clin Microbiol* 1994; 32: 823-4.
- [42] Bruschi M, Boyes SJ, Sugiarto H, Nielsen LK, Vickers CE. A transferable sucrose utilization approach for non-sucrose-utilizing *Escherichia coli* strains. *Biotechnol Adv* 2012; 30: 1001-10.
- [43] Figueira V, Serra EA, Vaz-Moreira I, Brandao TR, Manaia CM. Comparison of ubiquitous antibiotic-resistant Enterobacteriaceae populations isolated from wastewaters, surface waters and drinking waters. *J Water Health* 2012; 10: 1-10.
- [44] Martinez JL. Environmental pollution by antibiotics and by antibiotic resistance determinants. *Environ Pollut* 2009; 157: 2893-902.
- [45] Lopez-Cerero L, Egea P, Serrano L, *et al.* Characterisation of clinical and food animal *Escherichia coli* isolates producing CTX-M-15 extended-spectrum  $\beta$ -lactamase belonging to ST410 phylogroup A. *Int J Antimicrob Agents* 2011; 37: 365-7.
- [46] Van Meervenne E, Van Coillie E, Kerckhof F-M, *et al.* Strain-specific transfer of antibiotic resistance from an environmental plasmid to foodborne pathogens. *J Biomed Biotechnol* 2012; 2012: 834598.
- [47] Chouchani C, Salabi A, Marrakchi R, Ferchichi L, Walsh TR. Characterization of IncA/C conjugative plasmid harboring *bla*<sub>TEM-52</sub> and *bla*<sub>CTX-M-15</sub> extended-spectrum  $\beta$ -lactamases in clinical isolates of *Escherichia coli* in Tunisia. *Eur J Clin Microbiol Infect Dis* 2012; 31: 1081-7.
- [48] Tenaillon O, Skurnik D, Picard B, Denamur E. The population genetics of commensal *Escherichia coli*. *Nat Rev Microbiol* 2010; 8: 207-17.
- [49] Ogura Y, Ooka T, Asadulghani, *et al.* Extensive genomic diversity and selective conservation of virulence-determinants in enterohemorrhagic *Escherichia coli* strains of O157 and non-O157 serotypes. *Genome Biol* 2007; 8: R138.
- [50] Zhou Z, Li X, Liu B, *et al.* Derivation of *Escherichia coli* O157:H7 from its O55:H7 precursor. *PLoS ONE* 2010; 5: e8700.
- [51] Kaper JB, Nataro JP, Mobley HL. Pathogenic *Escherichia coli*. *Nat Rev Microbiol* 2004; 2: 123-40.
- [52] Bekal S, Brousseau R, Masson L, Prefontaine G, Fairbrother J, Harel J. Rapid identification of *Escherichia coli* pathotypes by virulence gene detection with DNA microarrays. *J Clin Microbiol* 2003; 41: 2113-25.
- [53] Croxen MA, Finlay BB. Molecular mechanisms of *Escherichia coli* pathogenicity. *Nat Rev Microbiol* 2009; 8: 26-38.
- [54] Masters N, Wiegand A, Ahmed W, Katouli M. *Escherichia coli* virulence genes profile of surface waters as an indicator of water quality. *Water Res* 2011; 45: 6321-33.