



The Open Microbiology Journal

Content list available at: <https://openmicrobiologyjournal.com>



RESEARCH ARTICLE

Study of Antifungal Susceptibility, Virulence Genes and Biofilm Formation in *Candida albicans*

Raghdah Shrief¹, Maysaa El Sayed Zaki^{2,*}, Eman Mousa El-Sehsah¹, Sara Ghaleb² and Mohamed Mofreh²

¹Medical Microbiology and Immunology Department, Mansoura Faculty of Medicine, El-Gomhoria street, Mansoura, Egypt

²Clinical Pathology Department, Mansoura Faculty of Medicine, El-Gomhoria street, Mansoura, Egypt

Abstract:

Background:

Candida albicans has emerged as an important nosocomial pathogen. The morbidity and mortality associated with this pathogen are related to the presence of virulence genes and antifungal resistance. The objective of the present study was to investigate the prevalence of antifungal resistance, biofilm formation and some virulence genes such as *ALS1*, *PLB1*, *INT1*, *SAP1* and *HWP1*, among clinical isolates of *Candida albicans* recovered from immunocompromised patients.

Methods:

The study included one hundred *C. albicans* isolates identified phenotypically and by a molecular technique using Polymerase Chain Reaction (PCR). The identified *C. albicans* was further subjected to antifungal study by the microdilution method, biofilm study and molecular study for virulence genes by PCR.

Results:

The resistance to antifungal drugs, fluconazole, caspofungin and itraconazole was 8% for each of them and for amphotericin B, it was 9%. The prevalence of the studied virulence genes was HWP1 77%, INT1 72%, ALS1 65%, SAP1 65% and PLB1 52%. The biofilm capacity was identified by the microplate method in 58% of *C. albicans*. The OD was intense in 20 isolates, moderate in 21 isolates and mild in 17 isolates. There was a statistically significant increase in the prevalence of the studied virulence genes INT1, ALS1, HWP1, SAP1 and PLB1 among biofilm forming *C. albicans* as compared to non-biofilm forming isolates ($P=0.0001$). Additionally, the resistance to fluconazole, itraconazole and caspofungin was statistically, significantly higher in *C. albicans* with the capacity to form biofilm as compared to non-biofilm forming *C. albicans*.

Conclusion:

The present study highlights the prevalence of resistance to antifungal drugs among *C. albicans* which are not uncommon. Moreover, there was a high prevalence of INT1, ALS1, HWP1, SAP1 and PLB1 genes in *C. albicans*. The resistance to antifungal drugs was common among isolates with the capacity to form the biofilm. There was an association between the biofilm formation and virulence genes.

Keywords: *C. albicans*, Virulence genes, Biofilm, Antifungal resistance, Morbidity, Microdilution method.

Article History

Received: May 16, 2019

Revised: September 10, 2019

Accepted: September 11, 2019

1. INTRODUCTION

Candida genus is a polymorphic diploid fungus and considered a part of human microbiota [1]. However, in certain pathogenic conditions, it can be a leading cause of infection either in superficial infections of skin and mucous membranes or systemic invasive infections. *Candida* species are the fourth cause of nosocomial bloodstream infections with a mortality rate of up to 40% [2, 3].

There are several *Candida* species such as *Candida albicans* (*C. albicans*), *Candida glabrata*, *Candida tropicalis*, and *Candida parapsilosis*, but *C. albicans* remains the most frequent species isolated from bloodstream infections [4].

There are several predisposing factors for invasive infections with *Candida* species as the presence of patient's immunocompromised conditions [5], physical alteration of the normal barrier such as surgery and overgrowth of *Candida* species after broad-spectrum antibiotics intake with the reduction of normal bacterial microbiota [6]. Early laboratory diagnosis of *Candida* invasive infections reduces the mortality rate from 40% to 15% after the start of appropriate antifungal therapy [7].

* Address correspondence to this author at Clinical Pathology Department, Mansoura Faculty of Medicine, El-Gomhoria street, Mansoura, Egypt; Email: may_s65@hotmail.com

Several pathogenic virulence factors are encoded by *C. albicans* genes and assist the fungus to invade the host tissues leading to infections. Among these virulence factors are the capacity of *C. albicans* to change from the budding yeast form to filamentous form, the expression of adhesion factors, the ability to form biofilm and the secretion of hydrolytic enzymes [8].

In *C. albicans*, the adhesion and biofilm formation are supposed to be mediated through the hyphal wall protein 1 (Hwp1) located on the surface of the hyphae [9]. The gene encoding Hwp1 is part of a core of eight genes induced during filamentation of *C. albicans* [10]. The adhesion of *C. albicans* is also mediated by agglutinin-like sequence 1 gene (*ALSI*) that mediates attachment to endothelial cells. It is also important for hyphal formation as well as adherence [11]. There are two genes with similar sequences and functions, *ALSI* and *ALS3* [12].

Additionally, the phospholipases protein 1 (PLB1 p) facilitates the invasion of *Candida albicans* through gastrointestinal tract leading to systemic infection [13]. Hydrolysis of peptide bonds of the host proteins is mediated by the secreted aspartyl proteinases (Saps), suggested to be involved in the virulence of *Candida albicans* [14]. The *INT1* gene is a virulence factor that contributes to the ability of *Candida albicans* to adhere to epithelial cells and form hyphae [15, 16].

The presence of virulence genes and the increasing prevalence of resistance to antifungal therapy have contributed to the pathogenicity of *Candida albicans*. Nevertheless, the association between the resistance profiles and virulence genes of *C. albicans* has not been studied sufficiently [17], especially in invasive *C. albicans* infections.

The objective of the present study was to investigate the prevalence of antifungal resistance, biofilm formation and some virulence genes, such as *ALSI*, *PLB1*, *INT1*, *SAP1* and *HWP1* among clinical isolates of *C. albicans*.

2. MATERIALS AND METHODS

This study included one hundred *Candida albicans* isolates from patients with nosocomial infections under chemotherapy for the treatment of malignancies admitted to intensive care units of Mansoura Oncology Centre, Mansoura city, Egypt during March 2017 till January 2019. The healthcare-associated infections were actively identified by the National Surveillance System supported by Supreme Council of Egyptian Universities in cooperation with Center of Disease Control. The study was approved by the Mansoura Faculty of Medicine Ethical Committee and approvals were obtained from the participating patients.

2.1. Samples and their Processing

The study samples were ten-milliliter blood samples obtained from each patient under complete antiseptic conditions and inoculated to two blood cultures for fungal culture, Mycosis-IC/F blood culture bottles. Urine samples were obtained as mid-stream urine sample in sterile container or from the catheter by sterile syringe from the sampling port on the catheter bag.

The isolated *C. albicans* was recovered from 56 blood cultures using BACTEC 9240 system and Mycosis-IC/F blood culture (Becton Dickinson Diagnostics-Heidelberg Germany). In addition, 44 isolates were recovered from urine cultures on Sabouraud dextrose media (Oxoid, Hampshire RG24 8PW, United Kingdom) with colony counts $> 10^5$ colony forming units/ml.

Phenotypic identification of *C. albicans* was performed by API20C biochemical reaction, the ability to form germ tube, the use of positive growth on hypertonic Sabouraud broth and colony character on the culture of tobacco agar media. Further molecular identification was carried out through a molecular method by the use of Polymerase Chain Reaction (PCR). The identified *C. albicans* was further subjected to antifungal study by microdilution method, biofilm study and molecular study for virulence genes by PCR.

2.2. Phenotypic Identification of *Candida albicans*

2.2.1. Growth on Hypertonic Sabouraud Broth.

Hypertonic Sabouraud broth was inoculated with the isolated colonies from Sabouraud dextrose agar and incubated at 28°C for 96 hours with a daily check for growth. Positive *Candida* growth indicated *C. albicans* species [18]. *C. albicans* (ATCC No. 90028) was used as a positive quality control strain.

2.2.2. Growth on Tobacco Agar

The subculture of the isolated *Candida* species was performed on Tobacco agar and the plates were incubated for 96 hours at 28°C with a daily check for growth. White creamy smooth growth was identified as *C. albicans* [19].

2.2.3. Biofilm Study

Pure *C. albicans* colonies were cultured on Sabouraud broth at 28°C with a continuous shake for 18 hours. Then a suspension was prepared from *C. albicans* using RPMI 1640 at the concentration of 10^6 /ml and 100 μ l of the suspension was inoculated into a 96-well microtiter plate in triplicate. Then the plate was incubated at 37°C for 48 hours. Negative control wells were inoculated with RPMI 1640 without *C. albicans*. Each well was then washed with 200 μ l phosphate buffer, air-dried and stained with 110 μ l 0.4% crystal violet solution for 45 min. Subsequently, each well was washed four times with 350 μ l sterile distilled water then 200 μ l of 95% ethanol was added and left for 45 min. After that, 100 μ l of the solution in each well was transferred to a new well and the optical density was measured with a microplate reader (Stat Fax 2100) at 595 nm. The absorbance values for the controls were subtracted from the values for the test wells [20].

Four biofilm density categories were used to grade the biofilms based on the established optical density cut-off values (OD_c), which were derived from the mean values of negative controls (mean OD_{nc}) summed with three standard deviations of the negative controls ($3 \times SD_{nc}$): $OD_c = \text{mean } OD_{nc} + (3 \times SD_{nc})$. The biofilm density categories used are as follows: $OD \leq OD_c = \text{biofilm negative}$, $OD_c < OD \leq 2 \times OD_c = \text{mildly}$

positive for biofilm, $2 \times OD_c < OD \leq 4 \times OD_c$ = moderately positive for biofilm, $OD > 4 \times OD_c$ = intensely positive for biofilm [21].

2.2.4. Minimum Inhibitory Concentration (MIC) determination for *C. albicans*

The susceptibility of the isolated *C. albicans* to amphotericin B, fluconazole, itraconazole and caspofungin was determined by the microdilution method. The minimum inhibitory concentrations were determined by the broth microdilution method as described by the Clinical and Laboratory Standards Institute [22]. *C. parapsilosis* ATCC 22019 and *C. krusei* ATCC 6258 were included as quality controls for each test performed.

2.3. Molecular Study for the Isolated *C. albicans*

2.3.1. DNA Extraction for Fungi

DNA was extracted from the isolated *C. albicans* using Qiagen DNA extraction kit according to the recommendations of the manufacturer (Qiagen-Germany).

2.3.2. Identification of *C. albicans*

Extracted DNA was amplified by specific primers for *C. albicans*. The used primers are listed in Table 1. The amplification procedures were as described previously [23].

2.3.3. Detection of Virulence Gene Markers by PCR

Extracted DNA was used for amplification of *HWPI*, *ALS1*, *aINT1*, *SAP1* and *PLB1* virulence genes. The genes and the sequences of the used primers are listed in Table 1. The amplification procedures for each of the studied genes were as described previously and the used amplification mixtures were from Qiagen in addition to 2.5 µl of each primer and 5 µl of the extracted DNA [23]. The PCR amplification products were visualized by electrophoresis on 1% agarose gels for 45 min at 70v. The size of the amplicons was determined by comparison to the 100 bp DNA ladder (Promega, USA).

Table 1. The sequences of the primers used for molecular study of the isolated *C. albicans* by PCR and size of amplicons (Base Pair (bp)).

Gene	Sequence of Primers	Size of Amplicon (bp)
<i>CALBI</i>	FP/TTTATCAACTTGTTGTACACACCAGA RP/ATCCCGCCTTACCACTACCG	273
<i>HWPI</i>	FP/ATGACTCCAGCTGGTTC RP/TAGAT CAAGAATGCAGC	572
<i>ALS1</i>	FP/GACTAGGAACAACAAATACCAGA RP/CCAGAAGAAACAGCAGGTGA	318
<i>INT1</i>	FP/AAGCTCTGATACCTACACTAGCGA RP/GTTAGGTCTAAAGTCGAAGTCATC	239
<i>SAP1</i>	FP/GCTCTTGCTATTGCTTTATTA RP/CATCAGGAACCCATAAATCAG	253
<i>PLB1</i>	FP/ATGATTTTGCATCATTG RP/AGTATCTGGAGCTCTAC	751

2.4. Statistical Analysis

The data was analyzed by SPSS 22. The qualitative data were expressed as counts and percentage. The comparison was performed by Chi-Square test and P was significant if its value was less than 0.05.

3. RESULTS

This study included 100 *C. albicans* isolates that were identified by phenotypic and molecular methods using a specific gene by PCR. The isolates were isolated from nosocomial infections of 56 patients with sepsis and 44 patients with urinary tract infections.

The resistance of the isolated *C. albicans* to antifungal drugs, fluconazole, caspofungin and itraconazole was 8% for each of them and 9% for amphotericin B (Table 2) using the microdilution method.

Table 2. Antifungal resistance of 100 *C. albicans* isolates using the microdilution method.

Antifungal	No.	%
Fluconazole	8	8%
Amphotericin B	9	9%
Caspofungin	8	8%
Itraconazole	8	8%

The prevalence of the studied virulence genes in *C. albicans* isolates was *HWPI* 77%, *INT1* 72%, *ALS1* 65%, *SAP1* 65% and *PLB1* 52% using PCR (Table 3, Fig. 1).

Table 3. Prevalence of the studied virulence genes in the 100 *C. albicans* isolates using PCR.

Genes	Frequency	%
<i>HWPI</i>	77	77%
<i>INT1</i>	72	72%
<i>ALS1</i>	65	65%
<i>SAP1</i>	65	65%
<i>PLB1</i>	52	52%

The biofilm capacity was identified by the microplate method in 58% of *C. albicans* isolates. The OD was intense in 20 isolates, moderate in 21 isolates and mild in 17 isolates. The optical density of all isolates is summarized in Figs. 2, 3.

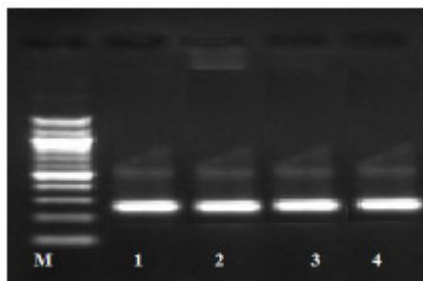
The resistance to the tested antifungal drugs increased in *C. albicans* with the capacity to form biofilm as compared to non-biofilm forming *C. albicans*; this increase for fluconazole was 12.1% in biofilm forming *C. albicans* versus non biofilm forming isolates (2.4%), itraconazole (12.1%) in biofilm forming *C. albicans* versus non biofilm forming isolates (2.4%), amphotericin B (13.8%) in biofilm forming *C. albicans* versus non biofilm forming isolates (2.4%) and caspofungin (12.1%) in biofilm forming *C. albicans* versus non biofilm forming isolates (2.4%), (Table 4). Additionally, there was a statistically significantly high prevalence of the studied virulence genes, *INT1*, *ALS1*, *HWPI*, *SAP1* and *PLB1* (98.3%, 96.6%, 96.6%, 96.6%, and 81.03%, respectively) among biofilm forming *C. albicans* as compared to non-biofilm forming isolates (35.7%, 21.4%, 50%, 21.4%, and 11.9%, respectively), $P=0.0001$, (Table 4).

Table 4. Comparison between biofilm forming *C. albicans* and non-biofilm forming *C. albicans*.

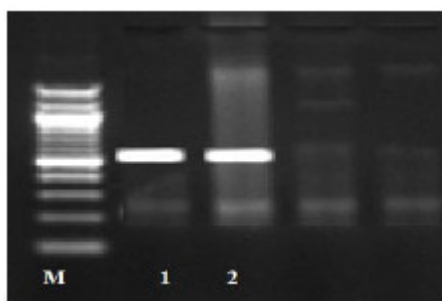
-	Biofilm forming <i>C. albicans</i> (No = 58) No. %	Non-biofilm forming <i>C. albicans</i> (No = 42) No. %	P
Sepsis Urine	33 56.9% 25 43.1%	23 54.8% 19 45.2%	P = 0.5
Fluconazole resistance	7 12.1%	1 2.4%	P = 0.1
Itraconazole resistance	7 12.1%	1 2.4%	P = 0.1
Amphotericin B resistance	8 13.8%	1 2.4%	P = 0.05
Caspofungin resistance	7 12.1%	1 2.4%	P = 0.1
<i>INT1</i>	57 98.3%	15 35.7%	P = 0.0001
<i>ALS1</i>	56 96.6%	9 21.4%	P = 0.0001
<i>HWPI</i>	56 96.6%	21 50%	P = 0.0001
<i>SAPI</i>	56 96.6%	9 21.4%	P = 0.0001
<i>PLB1</i>	47 81.03%	5 11.9%	P = 0.0001

4. DISCUSSION

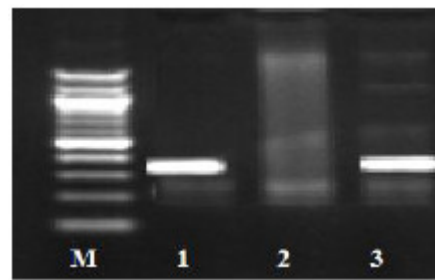
In the last few years, *Candida* species particularly *C. albicans* has emerged as an important nosocomial pathogen [24]. The differentiation between different *Candida* species depends mainly upon the biochemical identification, germ tube formation and the specific culture appearance on specific media [25].



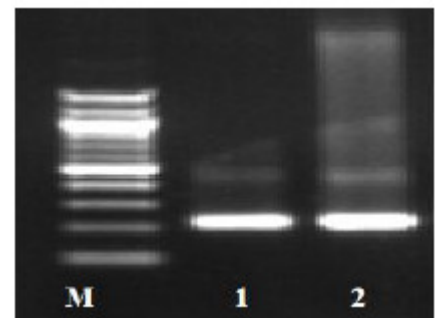
(1a). Positive PCR for CLA1 gene, M: marker, lanes 1,2,3,4 positive PCR for CLA1 genes.



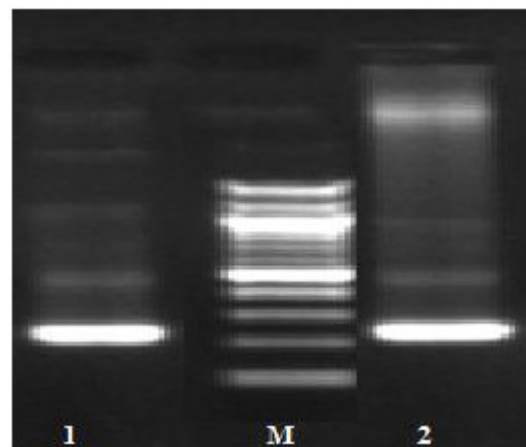
(1b). Positive PCR for HWPI gene, M: marker, lanes 1,2 positive PCR for HWPI genes.



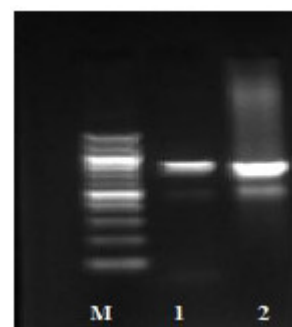
(1c). PCR for *ALS1* gene M; marker, lanes 1,3 positive PCR, lane 2 negative PCR.



(1d). PCR positive for *INT1* gene M; marker, lanes 1,2 positive PCR.



(1e). PCR positive for *SAPI* gene M; marker, lanes 1,2 positive PCR.



(1f). PCR positive for *PLB1* gene M; marker, lanes 1,2 positive PCR.

Fig. (1) Detection of different studied genes in the isolated *C. albicans* by PCR.

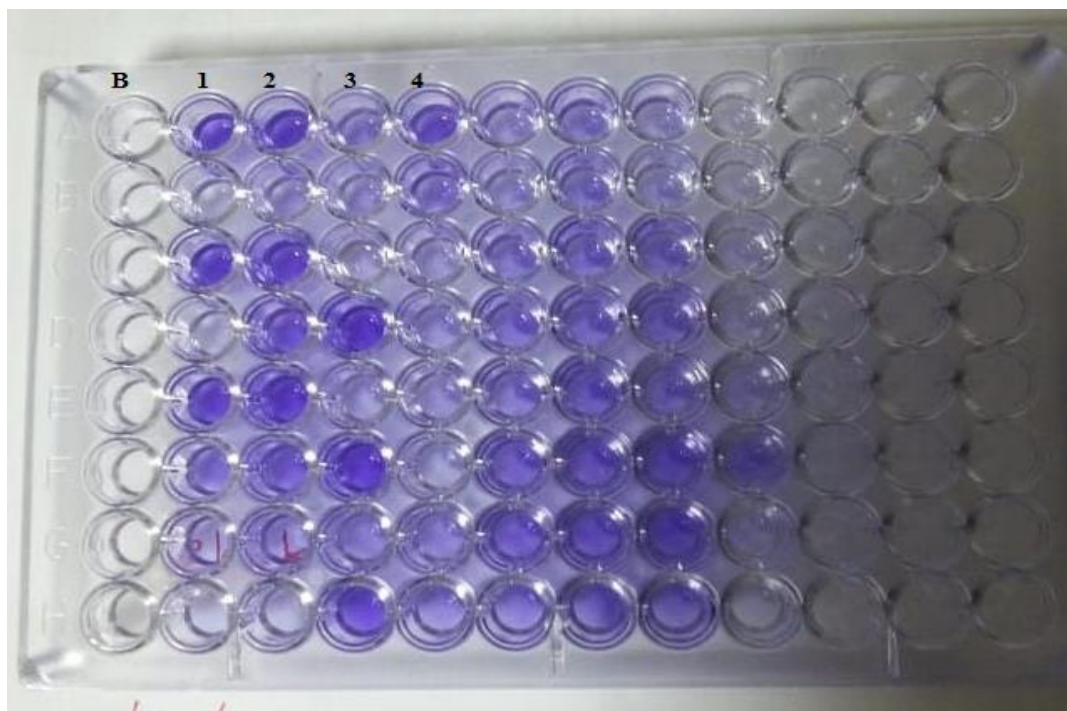


Fig. (2). Biofilm assay for *C. albicans* isolates using 96-well microtiter plate method. B: blank, Wells 1, 2: strong positive, Well 3: weak positive, Well 4: intermediates positive.

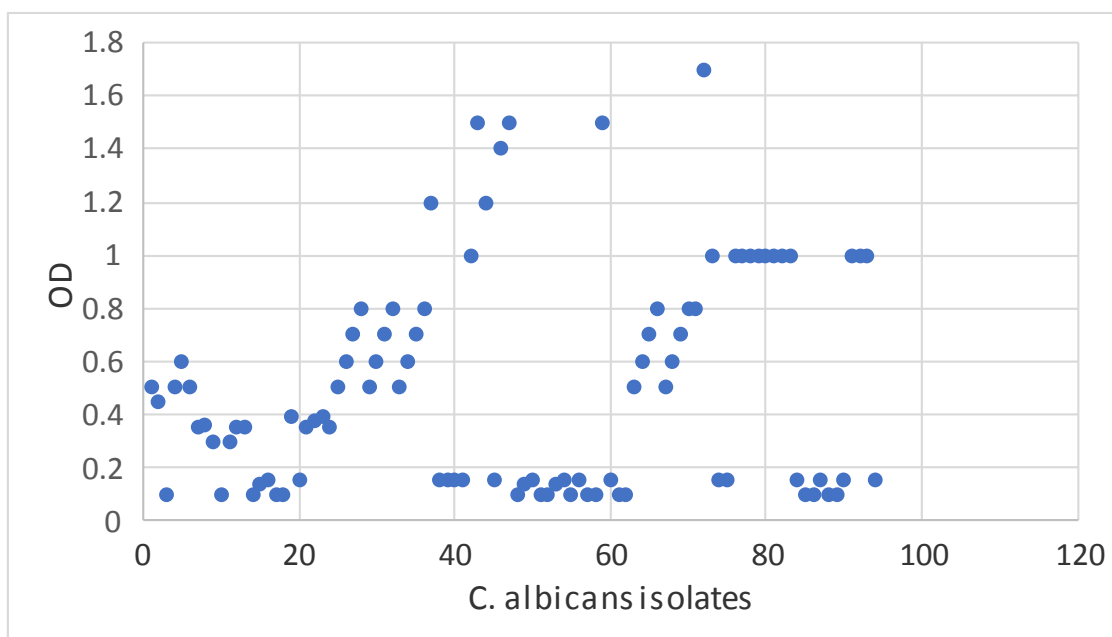


Fig. (3). Optical density of biofilm formation by all isolated *C. albicans*.

Similarly, in the present study, the identification of *Candida albicans* was performed by the biochemical reactions, germ tube and culture characters on specific media. Moreover, molecular identification was used to confirm the species of *C. albicans*. The primers used in the molecular identification were designed based on the sequence data for the Internal Transcribed Spacer (ITS) region-specific for *C. albicans* as shown previously [26].

The azoles are used for the treatment of fungal infections. These compounds exert their effects through the inhibition of ergosterol biosynthesis in the fatty cell membranes [27]. On the other hand, the antifungal effects of amphotericin B are directed through sequestration of ergosterol in the fungal cell membranes leading to its death and also through accumulation of reactive oxygen species which has been associated with cell damage, apoptosis induction and death [28].

In our study, the resistance to antifungal drugs, fluconazole, caspofungin and itraconazole was 8% for each of them and 9% for amphotericin B. The resistance of *Candida* species to different antifungal drugs either azoles or amphotericin B varied in different studies from 2.8% up to 80% [24, 29, 30]. Cross-resistance should be considered for some antifungal agents from the azole family [31]. The existing difference may be due to population or regional studies. Moreover, fluconazole in some immunocompromised patients was used as prophylaxis, which can explain the differences in resistance rates in some populations. Therefore, the present study highlights the importance to incorporate the antifungal susceptibility tests as a routine laboratory test for the management of systemic infection by *C. albicans*.

In the present work, the prevalence of the studied virulence genes was HWP1 77%, INT1 72%, ALS1 65%, SAP1 65% and PLB1 52%. A previous study revealed higher frequency for INT1, ALS1 (100%) and HWP1 (90.9%) with lower frequency of SAP1 (59.09%) and PLB1 (13.63%) [23]. Different prevalence rates for the virulence genes have been reported in the literature ranging from 5% to 100% [32, 33]. The difference in the prevalence rates of virulence genes may be attributed to several factors including the number of isolates studied and the difference of the isolation sites of *C. albicans*.

The biofilm capacity was identified by the microplate method in 58% of *C. albicans*. The OD was intense in 20 isolates, moderate in 21 isolates and mild in 17 isolates. The frequency of biofilm formation among isolated *C. albicans* from immunocompromised patients is similar to the previous study by Vijayalakshmi *et al.* [25], but higher than other work by Tumbarello *et al.* [34]. The difference in the frequency of biofilm formation may be attributed to the different *in vitro* study of biofilm formation. In the present work, the used method was the microplate method with the initial removal of non-adherent *C. albicans* as the standard method advised [35]. Considering the biofilm-forming capacity of these *C. albicans* isolates, their pathogenicity could result in severe co-infection with other diseases.

In the present study, there was a high prevalence of antifungal resistance to azoles, amphotericin B and caspofungin in biofilm forming *C. albicans*. This finding is in line with previous studies [25, 36]. This association between biofilm formation and antifungal resistance may be attributed to several mechanisms such as limited penetration of drug through biofilm matrix, decrease in the rate of *C. albicans*, need for nutrition and its persistence and increase in rate of the expression of resistance genes induced by contact with a surface and persistence of a small number of cells. The association between the capacity of *C. albicans* to form biofilm with the presence of resistance to antifungal drugs renders its treatment difficult and necessitates different lines of treatment [37].

This study revealed the statistically significant increase in the prevalence of the studied virulence genes, INT1, ALS1, HWP1, SAP1 and PLB1 among biofilm-forming *C. albicans* as compared to non-biofilm forming isolates. This was due to the hypothesis that adhesion of *C. albicans* at the initial step of the biofilm formation involves different virulence factors encoded

by virulence genes such as Als proteins [35] and Hwp1 [38, 39], all of which are expressed at much higher levels in hyphae than in yeast cells [37].

Thus, the present study revealed significant association between the virulence genes, antifungal resistance and biofilm formation among *C. albicans* associated with nosocomial infections

CONCLUSION

The present study highlights the prevalence of resistance to antifungal drugs among *C. albicans*, which are not uncommon. Moreover, there is a high prevalence of INT1, ALS1, HWP1, SAP1 and PLB1 genes in *C. albicans*. The resistance to antifungal drugs is common among *C. albicans* isolates with a capacity to form a biofilm. Additionally, there is an association between biofilm formation and virulence genes.

LIST OF ABBREVIATIONS

C. albicans	=	Candida albicans
PCR	=	Polymerase Chain Reaction
OD	=	Optical Density
MIC	=	Minimum Inhibitory Concentration
Bp	=	Base Pair

AUTHORS CONTRIBUTIONS

All authors have contributed to the manuscript.

ETHICS APPROVAL AND CONSENT TO PARTICIPATE

The study was approved by the Mansoura Faculty of Medicine Ethical Committee, Egypt.

HUMAN AND ANIMAL RIGHTS

No animals/humans were used for studies that are the basis of this research.

CONSENT FOR PUBLICATION

Informed consent was obtained from all the participants.

AVAILABILITY OF DATA AND MATERIALS

All data generated or analyzed throughout this research are included in this published article.

FUNDING

None.

CONFLICT OF INTEREST

The authors declare no conflict of interest, financial or otherwise.

ACKNOWLEDGEMENTS

The authors would like to thank all support staff and participating patients in this study.

REFERENCES

- [1] Gow NA, van de Veerdonk FL, Brown AJ, Netea MG. *Candida albicans* morphogenesis and host defence: Discriminating invasion from colonization. *Nat Rev Microbiol* 2011; 10(2): 112-22. [http://dx.doi.org/10.1038/nrmicro2711] [PMID: 22158429]
- [2] Karacaer Z, Oncul O, Turhan V, Gorenek L, Ozyurt M. A surveillance of nosocomial candida infections: Epidemiology and influences on mortality in intensive care units. *Pan Afr Med J* 2014; 19: 398-4960. [http://dx.doi.org/10.11604/pamj.2014.19.398.4960] [PMID: 25995794]
- [3] Pfaller MA, Diekema DJ. Epidemiology of invasive mycoses in North America. *Crit Rev Microbiol* 2010; 36(1): 1-53. [http://dx.doi.org/10.3109/10408410903241444] [PMID: 20088682]
- [4] Williams DW, Jordan RP, Wei XQ, et al. Interactions of *Candida albicans* with host epithelial surfaces. *J Oral Microbiol* 2013; 5: 5. [http://dx.doi.org/10.3402/jom.v5i0.22434] [PMID: 24155995]
- [5] Spellberg B. Novel insights into disseminated candidiasis: Pathogenesis research and clinical experience converge. *PLoS Pathog* 2008; 4(2):e38 [http://dx.doi.org/10.1371/journal.ppat.0040038] [PMID: 18282100]
- [6] van de Veerdonk FL, Kullberg BJ, Netea MG. Pathogenesis of invasive candidiasis. *Curr Opin Crit Care* 2010; 16(5): 453-9. [http://dx.doi.org/10.1097/MCC.0b013e3283e046e] [PMID: 20711079]
- [7] Kaur H, Chakrabarti A. Strategies to reduce mortality in adult and neonatal candidemia in developing countries. *J Fungi (Basel)* 2017; 3(3): 41. [http://dx.doi.org/10.3390/jof3030041] [PMID: 29371558]
- [8] Galocha M, Pais P, Cavalheiro M, Pereira D, Viana R, Teixeira MC. Divergent approaches to virulence in *C. albicans* and *C. glabrata*: Two sides of the same coin. *Int J Mol Sci* 2019; 20(9): 2345. [http://dx.doi.org/10.3390/ijms20092345] [PMID: 31083555]
- [9] Sundstrom P, Balish E, Allen CM. Essential role of the *Candida albicans* transglutaminase substrate, hyphal wall protein 1, in lethal oroesophageal candidiasis in immunodeficient mice. *J Infect Dis* 2002; 185(4): 521-30. [http://dx.doi.org/10.1086/338836] [PMID: 11865405]
- [10] Martin R, Albrecht-Eckardt D, Brunke S, Hube B, Hünninger K, Kurzai O. A core filamentation response network in *Candida albicans* is restricted to eight genes. *PLoS One* 2013; 8(3):e58613 [http://dx.doi.org/10.1371/journal.pone.0058613] [PMID: 23516516]
- [11] Fu Y, Ibrahim AS, Sheppard DC, et al. *Candida albicans* Als1p: An adhesin that is a downstream effector of the EFG1 filamentation pathway. *Mol Microbiol* 2002; 44(1): 61-72. [http://dx.doi.org/10.1046/j.1365-2958.2002.02873.x] [PMID: 11967069]
- [12] Nobile CJ, Schneider HA, Nett JE, et al. Complementary adhesin function in *C. albicans* biofilm formation. *Curr Biol* 2008; 18(14): 1017-24. [http://dx.doi.org/10.1016/j.cub.2008.06.034] [PMID: 18635358]
- [13] Samaranyake YH, Dassanayake RS, Jayatilake JAMS, et al. Phospholipase B enzyme expression is not associated with other virulence attributes in *Candida albicans* isolates from patients with human immunodeficiency virus infection. *J Med Microbiol* 2005; 54(Pt 6): 583-93. [http://dx.doi.org/10.1099/jmm.0.45762-0] [PMID: 15888468]
- [14] Naglik JR, Challacombe SJ, Hube B. *Candida albicans* secreted aspartyl proteinases in virulence and pathogenesis. *Microbiol Mol Biol Rev* 2003; 67(3): 400-28. [http://dx.doi.org/10.1128/MMBR.67.3.400-428.2003] [PMID: 12966142]
- [15] Asleson CM, Bensen ES, Gale CA, Melms AS, Kurischko C, Berman J. *Candida albicans* INT1-induced filamentation in *Saccharomyces cerevisiae* depends on Sla2p. *Mol Cell Biol* 2001; 21(4): 1272-84. [http://dx.doi.org/10.1128/MCB.21.4.1272-1284.2001] [PMID: 11158313]
- [16] Hostetter MK, Gale CA, Bendel CM, Tao NJ. DNA encoding-Candida albicans integrin-like protein United States Patent 2002. 6346411.
- [17] El-Houssaini HH, Elnabawy OM, Nasser HA, Elkhatib WF. Correlation between antifungal resistance and virulence factors in *Candida albicans* recovered from vaginal specimens. *Microb Pathog* 2019; 128: 13-9. [http://dx.doi.org/10.1016/j.micpath.2018.12.028] [PMID: 30562603]
- [18] Alves SH, Milan EP, de Laet Sant'Ana P, Oliveira LO, Santurio JM, Colombo AL. Hypertonic sabouraud broth as a simple and powerful test for *Candida dubliniensis* screening. *Diagn Microbiol Infect Dis* 2002; 43(1): 85-6. [http://dx.doi.org/10.1016/S0732-8893(02)00368-1] [PMID: 12052633]
- [19] Khan ZU, Ahmad S, Mokaddas E, Chandy R. Tobacco agar, a new medium for differentiating *Candida dubliniensis* from *Candida albicans*. *J Clin Microbiol* 2004; 42(10): 4796-8. [http://dx.doi.org/10.1128/JCM.42.10.4796-4798.2004] [PMID: 15472343]
- [20] Jin Y, Yip HK, Samaranyake YH, Yau JY, Samaranyake LP. Biofilm-forming ability of *Candida albicans* is unlikely to contribute to high levels of oral yeast carriage in cases of human immunodeficiency virus infection. *J Clin Microbiol* 2003; 41(7): 2961-7. [http://dx.doi.org/10.1128/JCM.41.7.2961-2967.2003] [PMID: 12843027]
- [21] Stepanovic S, Vukovic D, Dakic I, Savic B, Svabic-Vlahovic M. A modified microtiter-plate test for quantification of staphylococcal biofilm formation. *J Microbiol Methods* 2000; 40(2): 175-9. [http://dx.doi.org/10.1016/S0167-7012(00)00122-6] [PMID: 10699673]
- [22] Clinical and laboratory standards institute. reference method for broth dilution antifungal susceptibility testing of yeasts; approved standard M27-A3. 2008.
- [23] Abdul-Lateef LA-R. AL- Kafhaji KA, Al-Saddam ASK. Genetic identification of some virulence factors of *Candida albicans* in candidal intertrigo of diabetic patients in Hilla Province/ Iraq. *AJBAS* 2015; 9: 66-72.
- [24] Cox GM, Perfect JR. Fungal infections. *Curr Opin Infect Dis* 1993; 6: 422-6.
- [25] Vijayalakshmi P, Thenmozhi S, Rajeswari P. The Evaluation of the virulence factors of clinical *Candida* isolates and the anti-biofilm activity of *Elettaria cardamomum* against multi-drug resistant *Candida albicans*. *Curr Med Mycol* 2016; 2(2): 8-15. [PMID: 28681014]
- [26] Luo G, Mitchell TG. Rapid identification of pathogenic fungi directly from cultures by using multiplex PCR. *J Clin Microbiol* 2002; 40(8): 2860-5. [http://dx.doi.org/10.1128/JCM.40.8.2860-2865.2002] [PMID: 12149343]
- [27] Wynn RL, Jabra-Rizk MA, Meiller TF. Fungal drug resistance, biofilms, and new antifungals. *Gen Dent* 2003; 51(2): 94-8. [PMID: 15055679]
- [28] Mesa-Arango AC, Rueda C, Román E, et al. Cell wall changes in amphotericin B-resistant strains from *Candida tropicalis* and relationship with the immune responses elicited by the host. *Antimicrob Agents Chemother* 2016; 60(4): 2326-35. [http://dx.doi.org/10.1128/AAC.02681-15] [PMID: 26833156]
- [29] Jabra-Rizk MA, Falkler WA, Meiller TF. Fungal biofilms and drug resistance. *Emerg Infect Dis* 2004; 10(1): 14-9. [http://dx.doi.org/10.3201/eid1001.030119] [PMID: 15078591]
- [30] Dos Santos Abrantes PM, McArthur CP, Africa CW. Multi-drug resistant oral *Candida* species isolated from HIV-positive patients in South Africa and Cameroon. *Diagn Microbiol Infect Dis* 2014; 79(2): 222-7. [http://dx.doi.org/10.1016/j.diagmicrobio.2013.09.016] [PMID: 24726686]
- [31] Badiee P, Badali H, Diba K, et al. Susceptibility pattern of *Candida albicans* isolated from Iranian patients to antifungal agents. *Curr Med Mycol* 2016; 2(1): 24-9. [http://dx.doi.org/10.18869/acadpub.cmm.2.1.24] [PMID: 28681009]
- [32] Inci M, Atalay MA, Ozer B, Evrigen O, Duran N, Motor VK, et al. Investigations of *ALS1* and *HWP1* genes in clinical isolates of *Candida albicans*. *Turk J Med Sci* 2013; 43: 125-30.
- [33] Ali AS, Al-Attraqchi AAF, Al-Ahmar SD. Molecular detection of *ALS1* virulence gene of *Candida albicans* isolated from groups of Iraq patients. *J Fac Med Baghdad* 2014; 57: 79-83.
- [34] Tumbarello M, Posteraro B, Trecarichi EM, et al. Biofilm production by *Candida* species and inadequate antifungal therapy as predictors of mortality for patients with candidemia. *J Clin Microbiol* 2007; 45(6): 1843-50. [http://dx.doi.org/10.1128/JCM.00131-07] [PMID: 17460052]
- [35] Hoyer LL, Green CB, Oh SH, Zhao X. Discovering the secrets of the *Candida albicans* Agglutinin-Like Sequence (ALS) gene family--a sticky pursuit. *Med Mycol* 2008; 46(1): 1-15. [http://dx.doi.org/10.1080/13693780701435317] [PMID: 17852717]
- [36] Jabra-Rizk MA, Falkler WA, Meiller TF. Fungal biofilms and drug resistance. *Emerg Infect Dis* 2004; 10(1): 14-9.

- [37] [http://dx.doi.org/10.3201/eid1001.030119] [PMID: 15078591]
Bhatt M, Sarangi G, Paty BP, *et al.* Biofilm as a virulence marker in *Candida* species in Nosocomial blood stream infection and its correlation with antifungal resistance. *Indian J Med Microbiol* 2015; 33(Suppl.): 112-4.
[http://dx.doi.org/10.4103/0255-0857.150909] [PMID: 25657126]
- [38] Staab JF, Bradway SD, Fidel PL, Sundstrom P. Adhesive and mammalian transglutaminase substrate properties of *Candida albicans* Hwp1. *Science* 1999; 283(5407): 1535-8.
[http://dx.doi.org/10.1126/science.283.5407.1535] [PMID: 10066176]
- [39] Nobile CJ, Nett JE, Andes DR, Mitchell AP. Function of *Candida albicans* adhesin Hwp1 in biofilm formation. *Eukaryot Cell* 2006; 5(10): 1604-10.
[http://dx.doi.org/10.1128/EC.00194-06] [PMID: 17030992]

© 2019 Sayed Zaki *et al.*

This is an open access article distributed under the terms of the Creative Commons Attribution 4.0 International Public License (CC-BY 4.0), a copy of which is available at: (<https://creativecommons.org/licenses/by/4.0/legalcode>). This license permits unrestricted use, distribution, and reproduction in any medium, provided the original author and source are credited.